

# Shelter

Written by: KRISTER LILLAS

Performed by: PRAISELAND

MM=132

A



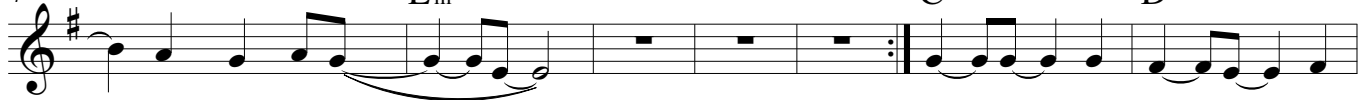
You're the Rock on which I stand, my Foun - da -  
You're my Fort - ress, You're my Shield, when You touch  
You're my Re - fuge in the night, in the dark -  
You're my Strength, my so - lid ground, I am safe

4

Em

C

D



- tion in the sand Foes may as - sail me on  
- I will be healed  
- ness You're my Light  
- when You're a - round

11

Em

Em/D

C

A

B



eve - ry side, all a - round, I will re - ly on the Lord

17

Em

Em/D#

Em/D

Em/C#

C



Oh - oh, up - on the stor - my sea You prove Your love for me, Your

23

B

D

Em

Em/D#

Em/D



pre - sence's all I need. Oh - oh, when You are by my side,

28

Em/C#

C

A

B

Em



my Shel - ter and my Guide, I'll ne - ver have to run nor hide.

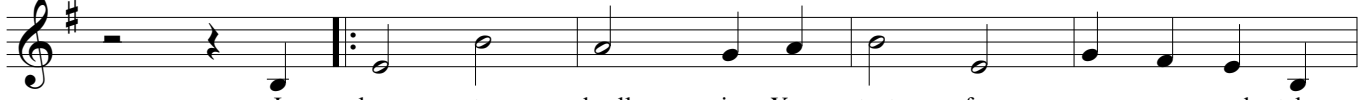
34

Em

Em/D#

Em/D

Em/C#



I long to dwell in Your tent for - e - ver and take

39

C

D

Em

Bm7



re - fuge in the shel - ter of Your wings. I

43  $E_m$   $G_m$   $G_m/F\#$   $G_m/F$

Oh - oh, Oh - oh, up - on the stor - my sea

48  $G_m/E$   $E_b$   $D$

— You prove Your love for me, Your pre - sence's all I

52  $F$   $G_m$   $G_m/F\#$   $G_m/F$   $G_m/E$

need. Oh - oh, when You are by my side, my

57  $E_b$   $C$   $D$   $G_m$

Shel - ter and my Guide, I'll ne - ver have to run nor hide.